

Attendance Tracking System Using Facial Recognition

Prof. Sumita Gupta, Shruti Gunjal, Alok Jha, Tanvi Kadam, Karan Paikrao

Department of Electronics & Telecommunication Engineering, KC College of Engineering and Management Studies & Research, Maharashtra, India

Engineering Student, Department of Electronics & Telecommunication Engineering, KC College of Engineering and Management Studies & Research, Maharashtra, India

Engineering Student, Department of Electronics & Telecommunication Engineering, KC College of Engineering and Management Studies & Research, Maharashtra, India

Engineering Student, Department of Electronics & Telecommunication Engineering, KC College of Engineering and Management Studies & Research, Maharashtra, India

Engineering Student, Department of Electronics & Telecommunication Engineering, KC College of Engineering and Management Studies & Research, Maharashtra, India

ABSTRACT: Accurate attendance monitoring is an important task in educational institutions and workplaces. Conventional attendance methods such as manual registers and biometric devices often require significant time and may lead to errors or proxy attendance. To overcome these limitations, this study presents an automated attendance tracking system based on facial recognition technology. The proposed system captures real-time images using a camera and identifies individuals by analyzing distinctive facial characteristics. Detected faces are processed using computer vision techniques and compared with stored facial data to verify identity. Once the identity is confirmed, the system records attendance automatically along with the corresponding date and time. Unlike many traditional systems, the proposed solution is capable of recognizing multiple individuals simultaneously within a single frame, making it suitable for classroom environments where several students may be present at once. The system is implemented using Python and computer vision libraries, enabling efficient face detection and recognition. Experimental evaluation indicates that the proposed approach improves attendance management by reducing manual effort, preventing proxy attendance, and providing a faster and more reliable method for maintaining attendance records.

KEYWORDS: Facial Recognition, Automated Attendance System, Computer Vision, Face Detection, Machine Learning, Multi-Face Recognition, Image Processing, Attendance Monitoring System.

I. INTRODUCTION

Maintaining reliable attendance records is an important requirement for educational institutions and workplaces. Attendance information is often used to evaluate participation, maintain discipline, and support administrative decisions. In many institutions, attendance is still recorded manually through paper registers or simple digital entries. Although these methods are easy to implement, they are time-consuming and can sometimes lead to inaccurate records due to human error or proxy attendance.

Biometric technologies such as fingerprint and RFID-based systems have been introduced to improve attendance monitoring. While these systems provide better authentication compared to manual methods, they often require specialized hardware and physical interaction with the device. In environments with a large number of users, such methods may still cause delays and inconvenience during attendance collection.

Advances in artificial intelligence and computer vision have enabled the development of intelligent identification systems that can recognize individuals automatically. Facial recognition is one such technology that identifies a person

by analyzing distinctive facial characteristics. Since it does not require physical contact or additional devices for each user, facial recognition offers a convenient and contactless approach for identity verification.

In recent years, facial recognition techniques have been applied in many areas such as surveillance, security authentication, and access control systems. These developments have also encouraged researchers to explore the use of facial recognition for automated attendance tracking. By capturing images through a camera and processing them with computer vision algorithms, individuals can be identified automatically and their attendance can be recorded in a database.

The aim of this research is to design and implement an attendance tracking system based on facial recognition technology. The system captures real-time video frames, detects faces present in the frame, and compares them with previously stored facial images to determine identity. Once an individual is recognized, the system records attendance automatically along with the corresponding date and time.

A key feature of the proposed system is the capability to detect and recognize multiple individuals simultaneously within a single frame. This feature makes the system particularly useful in classroom environments where several students may appear in front of the camera at the same time. By reducing manual effort and minimizing the possibility of proxy attendance, the proposed system provides a more efficient and reliable solution for attendance management.

II. LITERATURE SURVEY

1) Multiple Face Detection Attendance System — Arijit Haldar et al. (2022)

Haldar and his research team presented an automated system designed to manage attendance using facial recognition technology. In this approach, a camera captures images of students present in a classroom, and the system processes these images using face detection techniques to locate human faces within the frame. After detecting the faces, important facial characteristics are extracted and compared with previously stored facial data in a database to determine the identity of each individual. When the identity is successfully verified, the system automatically records attendance along with the corresponding time information. A key feature of the system is its capability to identify several individuals within a single frame, allowing attendance to be recorded for multiple students at once. The study demonstrates that such automated systems can reduce manual effort and improve the efficiency of attendance monitoring, although factors like lighting conditions and face positioning may still influence system performance.

2) Smart Attendance System Using OpenCV Based on Facial Recognition — Shiresha Chintalapati and M. V. Raghunadh (2020)

Chintalapati and Raghunadh proposed a smart attendance system that utilizes computer vision techniques and the OpenCV library to automate the process of attendance tracking. In this system, images are captured through a webcam and processed to detect human faces present in the frame. Once the faces are detected, the system extracts key facial features and compares them with previously registered facial images stored in the system database. If the detected face matches an existing record, the system automatically marks the individual's attendance. The research emphasizes that integrating facial recognition with image processing techniques can provide a faster and more reliable alternative to traditional attendance methods. Additionally, the system offers the advantage of contactless identification, which increases convenience and reduces manual effort.

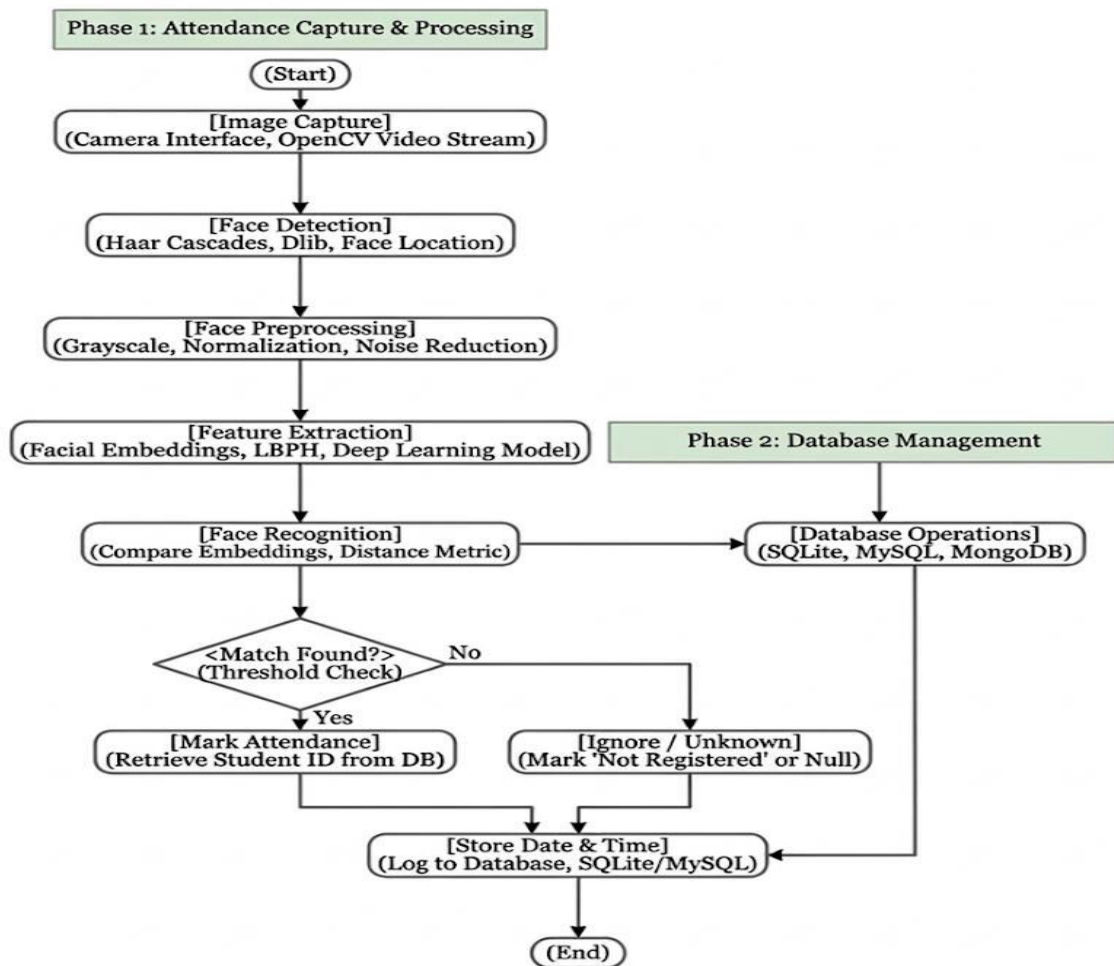
3) Face Recognition Based Attendance Monitoring System — R. K. Yadav et al. (2019)

Yadav and colleagues introduced an attendance monitoring system that relies on facial recognition for identifying students automatically. The system processes images captured by a camera and applies face detection algorithms to locate faces within the image. After detection, facial feature extraction is performed to obtain unique characteristics that distinguish one individual from another. These extracted features are then compared with stored facial data in a database to verify identity. When a match is confirmed, attendance is recorded automatically. The authors demonstrate that this approach provides a more efficient method of attendance management by eliminating manual recording and reducing the possibility of proxy attendance. However, the study also notes that recognition accuracy can be affected by factors such as image quality and lighting variations.

4) Smart Group Attendance Monitoring System Using Face Recognition — S. Arivazhagan et al. (2018)

Arivazhagan and his research team designed a group-based attendance monitoring system capable of recognizing multiple individuals at the same time. The system captures images of groups using a camera and processes them through face detection algorithms to identify individual faces within the frame. After detecting each face, the system extracts unique facial features and compares them with the registered dataset stored in the system database. If a matching record is found, attendance is marked automatically. The study demonstrates that group recognition systems can significantly reduce the time required to record attendance in classrooms where many students are present simultaneously. The research also highlights the importance of improving system performance under different environmental conditions such as changes in lighting or facial expressions.

III. PROPOSED METHODOLOGY



IV. IMPLEMENTATION / EXPERIMENTAL SETUP

The implementation of the **Attendance Tracking System Using Facial Recognition** is based entirely on software components that work together to automate the attendance recording process. The system uses computer vision and machine learning techniques to detect and recognize faces in real time and record attendance automatically. The architecture focuses on real-time processing, efficient database storage, and a user-friendly web interface for monitoring attendance records.

1. System Setup

1. Computer System (Processing Unit):

A standard computer or laptop is used as the main processing unit for the system. It runs the facial recognition algorithms, processes real-time camera input, and manages the database that stores attendance records. The system performs face detection and recognition using computer vision techniques.

2. Web Camera (Image Capture Device):

A webcam is used to capture real-time images or video frames of individuals present in the classroom. The captured frames are processed by the facial recognition module to detect and identify faces.

3. Local Storage and Database:

A local database is used to store student details and attendance records. Each recognized individual is logged with their name, identification number, date, and time of attendance.

2. Software Setup

1. Operating System:

The attendance system was developed and tested on a Windows operating system. This platform provides a suitable environment for running Python programs and the computer vision libraries used in the project.

2. Programming Languages and Libraries:

- **Python 3:** Python is used as the main programming language to develop the facial recognition system and handle the backend functionality of the application.
- **OpenCV:** OpenCV is used to capture images from the webcam and detect faces in the video frames. It also performs various image processing operations required for the recognition process.
- **Face Recognition Library:** This library is used to extract important facial features from images and convert them into encoded values. These values are later compared with stored data to recognize individuals.
- **NumPy :** NumPy supports mathematical and numerical operations that are required during image processing and feature comparison.

3. Web Interface:

A user-friendly web interface was created using **HTML, CSS, and JavaScript**. This interface allows instructors or administrators to view the list of registered users, check attendance records, and monitor attendance data easily.

4. Database Management:

The system maintains a database that stores student details and attendance information. When a face is recognized successfully, the system automatically saves the attendance entry with the corresponding date and time.

5. Recognition Mechanism:

The recognition process begins when the webcam captures an image. The system detects the face in the image and converts it into a facial encoding. This encoding is compared with the stored encodings in the database. If a match is found, the person is identified and their attendance is recorded automatically.

3. Experimental Environment

1. Testing Environment :

The proposed attendance system was tested in a controlled indoor environment such as a classroom or laboratory. The objective of testing was to evaluate the system's capability to detect and recognize faces in real time while multiple individuals were present in front of the camera.

2. Test Setup:

Initially, facial images of registered users were collected and stored in the system dataset. During testing, these individuals appeared in front of the webcam, and the system attempted to detect their faces and match them with the stored data. The attendance was automatically recorded when a correct match was found.

3. Evaluation Metrics:

- **Recognition Accuracy:** Measures how accurately the system identifies registered individuals.
- **Processing Time:** Represents the time taken by the system to detect and recognize faces from the captured frame.
- **Multi-face Detection :** Evaluates the system’s ability to identify more than one person in a single frame.
- **Attendance Recording Efficiency:** Determines how effectively the system records attendance automatically without manual intervention.

4. Additional Considerations:

- **Ease of Deployment :** Can The system can be installed and used on a standard computer with a webcam, making it easy to deploy in educational institutions.
- **Cost Efficiency:** Since the system relies only on software and basic hardware like a webcam, the overall cost of implementation is low.
- **Contactless Operation:** The system allows attendance to be recorded without physical contact, making it convenient and hygienic.

V. RESULT

Comparison Parameter	Face Recognition Based Attendance System	Smart Attendance System using OpenCV	Smart Group Attendance Monitoring System	Multiple Face Detection Attendance System	Face Recognition Attendance using Machine Learning	Proposed System
Year	2018	2020	2019	2021	2022	2025
Technique Used	Face recognition algorithm	OpenCV face detection	Group face recognition	Multi-face detection	Machine learning based recognition	Real-time facial recognition
Hardware Requirement	Computer + webcam	Webcam + PC	Camera + computer	Webcam + processor	PC with camera	Laptop/PC + webcam
Cost	Low	Low	Moderate	Low	Moderate	Very low
Real-time Capability	Partial	Yes	Yes	Yes	Partial	Yes
Detection Focus	Individual face recognition	Student attendance detection	Group attendance	Multiple face detection	Facial identification	Multiple face recognition
Attendance Recording	Semi-automatic	Automatic	Database storage	File Storage	Digital attendance	Automatic with timestamp
User Interface	Basic interface	GUI interface	Database interface	Simple interface	Web interface	Web dashboard
System Complexity	Moderate	Low	Moderate	Moderate	High	Low
Scalability	Small groups	Classroom level	Large groups	Medium scale	Large dataset	Classroom and institutional use.

Software:

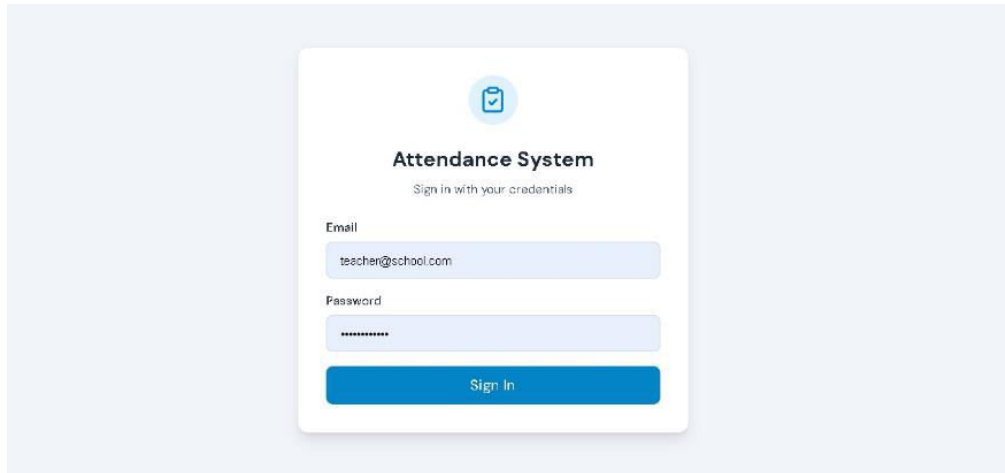


Fig. Home

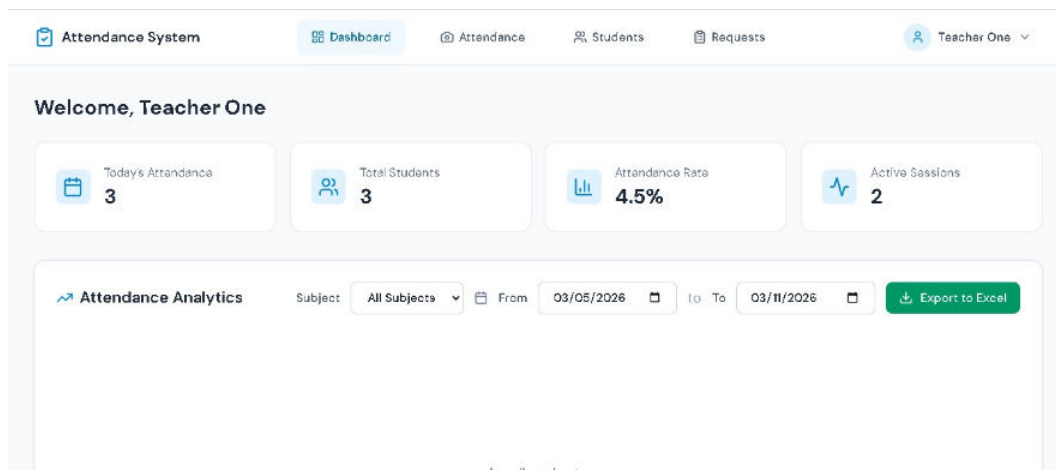


Fig. Dashboard

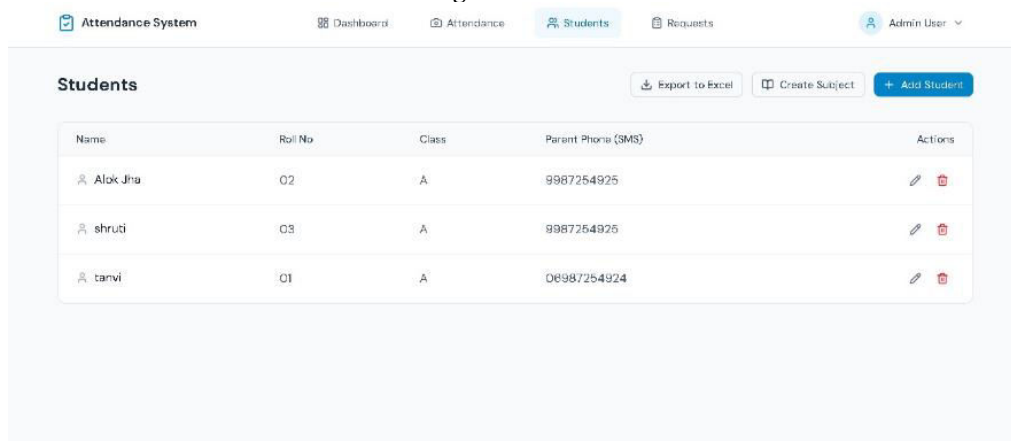


Fig. Students Management Page

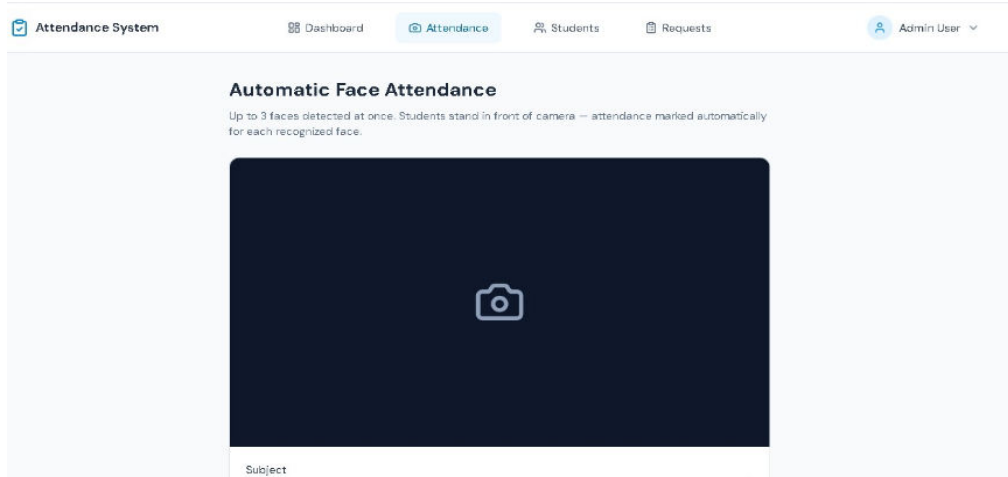


Fig. Attendance Interface

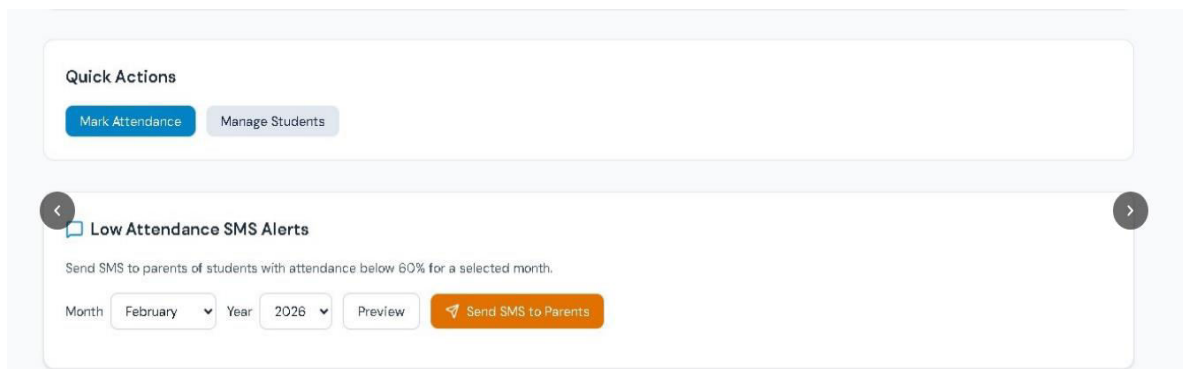


Fig . SMS Alert

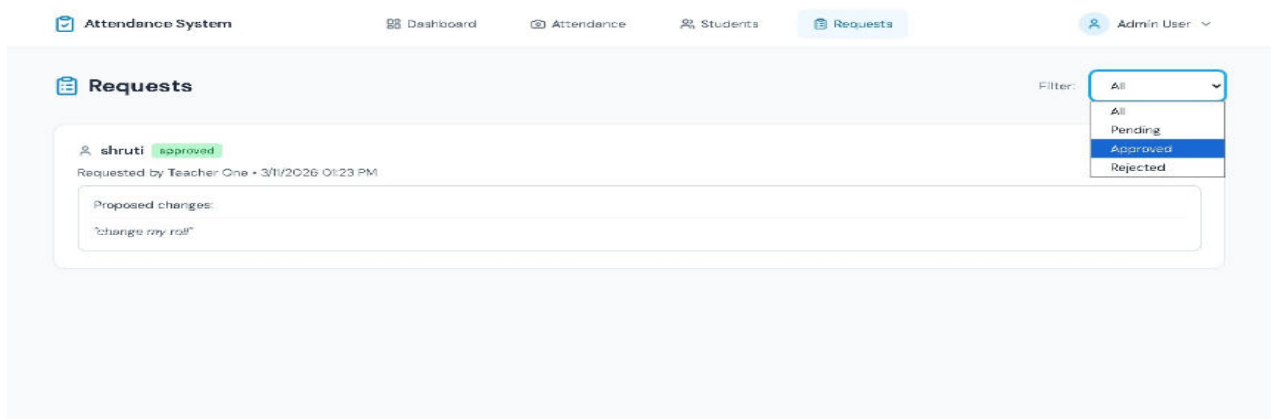


Fig Request Panel Page

V. FUTURE SCOPE

- The proposed facial recognition attendance system can be further enhanced by incorporating advanced deep learning algorithms to improve accuracy under varying lighting conditions and different face orientations.

- The system can also be extended by integrating cloud-based storage solutions, which would allow efficient data management and remote access to attendance records.
- Future improvements may include the implementation of liveness detection techniques to prevent spoofing using photographs or videos.
- The system can also be scaled for large institutions and integrated with other technologies such as biometric or RFID systems to further enhance security and reliability.

VI. CONCLUSION

This work introduced an automated attendance management system that uses facial recognition to identify individuals and record their presence digitally. The system captures images through a camera, detects faces within the frame, and analyzes distinctive facial characteristics to verify each person against stored records. When a valid match is detected, the system logs the attendance automatically with the corresponding date and time. This approach reduces the dependence on manual attendance methods and helps prevent proxy attendance. The ability to recognize several individuals in a single frame also makes the system suitable for classroom environments where many students are present. Overall, the proposed system demonstrates that facial recognition technology can provide a practical and efficient solution for modern attendance monitoring.

REFERENCES

1. Lukas, S., Mitra, A. R., Desanti, R. I., & Krisnadi, D. (2016). Student attendance system using face recognition technique.
2. Haldar, A., Banerjee, S., & Das, S. (2022). Multiple face detection attendance system using image processing techniques.
3. Arivazhagan, S., Kumar, P., & Rajan, S. (2018). Smart group attendance monitoring system using face recognition.
4. Winarno, E., Hadikurniawati, W., & Rosso, R. N. (2018). Anti-cheating presence system using dual vision face recognition.
5. Viola, P., & Jones, M. (2001). Rapid object detection using a boosted cascade of simple features. IEEE.
6. Yadav, R. K., Singh, P., & Sharma, A. (2019). Smart attendance system using face recognition.
7. Jain, A. K., Ross, A., & Prabhakar, S. (2004). An introduction to biometric recognition. IEEE Transactions on Circuits and Systems for Video Technology.
8. Geng, X., Yin, C., & Zhou, Z. (2006). Face recognition under uncontrolled conditions.
9. Franco, Chintalapati, S., & Raghunadh, M. V. (2020). Smart attendance system using OpenCV based on facial recognition.
10. InsightFace Team, "InsightFace: 2D and 3D Face Analysis Project," GitHub Repository, 2023.



INTERNATIONAL
STANDARD
SERIAL
NUMBER
INDIA



INTERNATIONAL JOURNAL OF INNOVATIVE RESEARCH

IN SCIENCE | ENGINEERING | TECHNOLOGY

 9940 572 462  6381 907 438  ijirset@gmail.com



www.ijirset.com

Scan to save the contact details